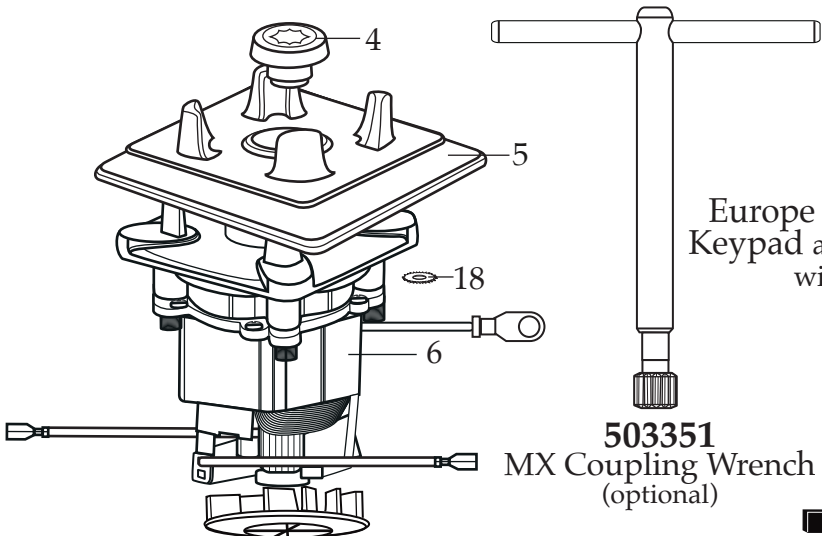


WARING COMMERCIAL

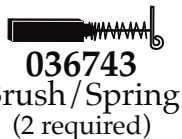
Europe Xtreme Blenders with Electronic Membrane Keypad and a 30 Second Electronic Countdown Timer with a 48 oz. Stackable Raptor Container

MX1100XTPEE MX1100XTPSEE

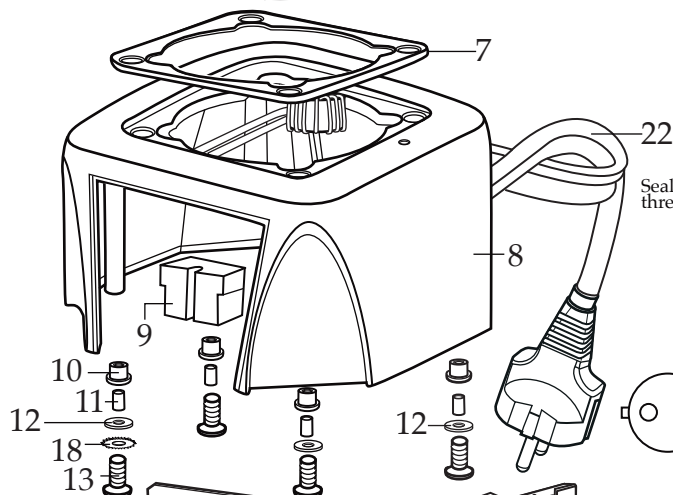
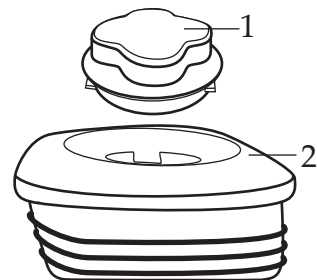
with Sound Enclosure



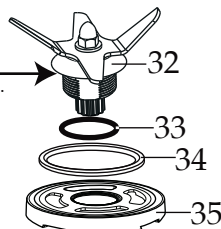
503351
MX Coupling Wrench
(optional)



036743
Brush/Spring
(2 required)

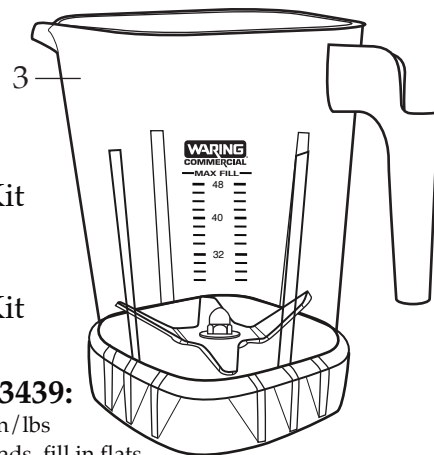


Sealant all round threads, fill in flats.



030889
Blending Assembly Kit
(with 503397)

031060
Blending Assembly Kit
(with 503345)

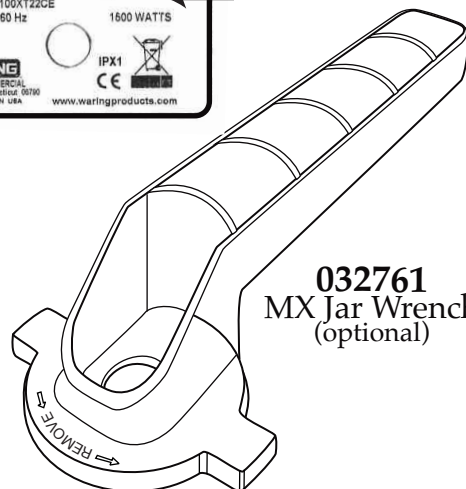


Notes for 503439:

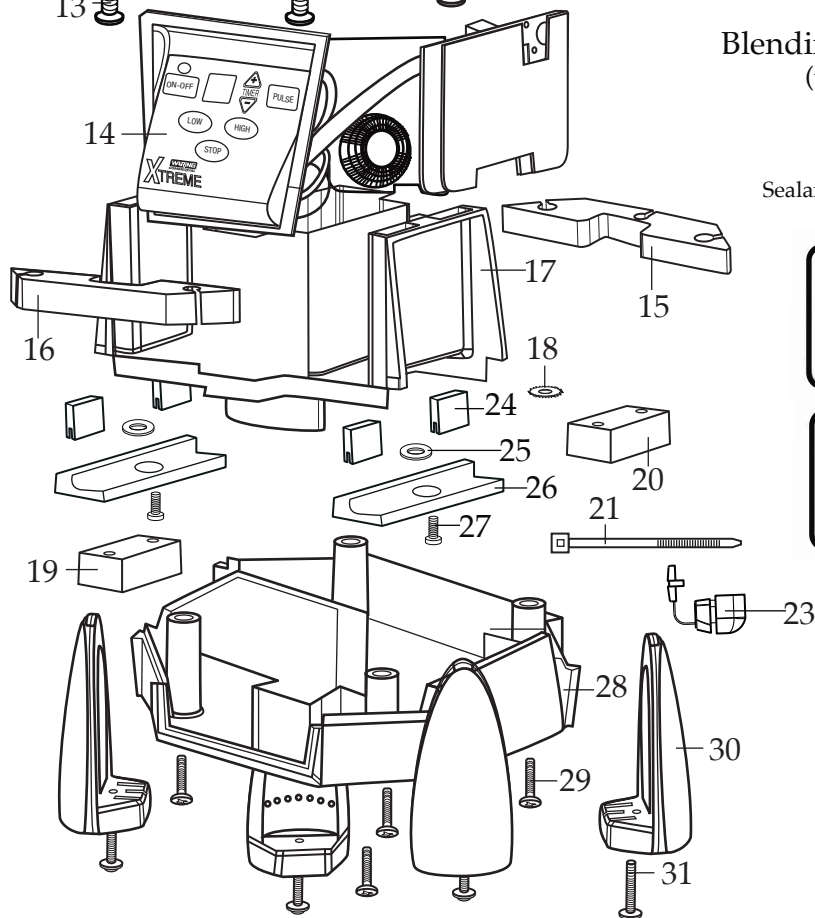
Torque 100-125 in/lbs
Sealant all around the threads, fill in flats.
Dow Corning Sealant RTV 733



Date Code Location
YY|MM|DD
year year month month day day



032761
MX Jar Wrench
(optional)



Catalog

Model

MX1100XTPEE MX1100XT21CE MX1100XT21EE
 MX1100XTPSEE MX1100XT22SCE MX1100XT22SEE

(on units after 7/29/2009)



Illustration#	Part#	Description
1	028769-E 028769 026425	Jar Lid Cover (<i>changed after 8/25/2010</i>) MX/TBB Eastman Jar Lid Cover (use 028769-E on units after 7/29/2008) MX Eastman Jar Lid Cover (use 026425-E)
2	028768 026424	MX-XT Jar Lid (<i>on units after 7/29/2008</i>) MX Vinyl Jar Lid (use 026424-V)
3	030888 503439 503348 503374 503010	48 oz. Stackable Container ONLY (<i>changed after 8/25/2010</i>) 48 oz. Stackable Container Assembly (<i>on units after 3/18/2014</i>) 48 oz Eastman Container Assembly (<i>on units after 2/24/2011 use 503349</i>) 48 oz Jar with Blending Assembly (<i>on units after 8/25/2010</i>) (use 503309) - 503309 (use 503348) - 503348 (use 503439)
4	503601 503604 028538	Sq. Drive Coupling with Adapter (<i>on units after 3/29/2022</i>) Sq. Drive Coupling with Adapter 2 Gen. (<i>changed after 5/7/2021</i>) Drive Coupling
5	026442	Jar Pad
6	035398 028823	Leili Motor without Sensor (<i>on units after 7/21/2017</i>) ECM Motor without Sensor (use 035398 with kit 503382-E-67)
7	038278 026437	Dampening Plate Gasket (<i>on units after 8/25/2022</i>) Dampening Plate Gasket
8	503382-E-67 503382-E	MX Housings, Ferrite Core & Cord (<i>on units after 7/21/2017</i>) MX Housings, Ferrite Core & Cord (<i>on units after 8/22/2012</i>)
9	028541	Motor Foam (2 required)
10	026439	Dampening Plate Bushing (4 required)
11	038486 026453	Dampening Plate Sleeve (4 required <i>on units after 8/25/2022</i>) Dampening Plate Sleeve (4 required)
12	026459	Washer (2 required)
13	028929	Sems (4 required)
14	036399 029815	Control Panel with Interlock (<i>on units after 6/21/2018</i>) comes with key board-main board-filter board Soft Start Control Panel (<i>changed after 8/22/2012 use 036339</i>)
15	028248	Top Housing Foam Rear Baffle
16	028249	Top Housing Foam Front Baffle
17		<i>Motor Housing Included with Illustration # 8</i>
18	002943	Washer (3 required)
19	028247	Bottom Housing Foam Baffle
20	028542	Foam Baffle
21	013731	Cable Tie (3 required <i>on units after 9/22/2008</i>) – (2 required)
22		<i>Cord Included with Illustration # 8</i>
23	007556 035384 007556	Strain Relief (<i>changed after 6/21/2018</i>) Strain Relief (<i>on units after 4/1/2016</i>) Strain Relief
24	034900	PCB Cushions (4 required <i>on units after 7/18/2019</i>)
25	037232	Flat Neoprene Washer (2 required <i>on units after 7/18/2019</i>)

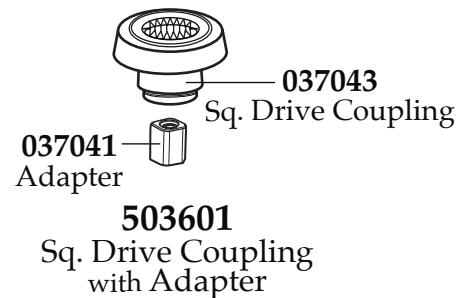
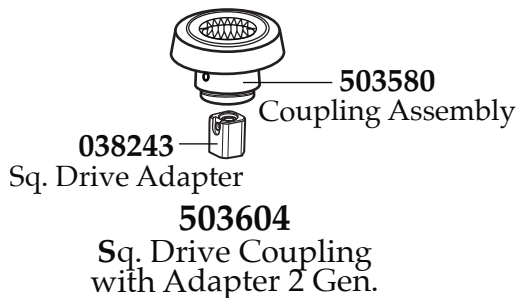
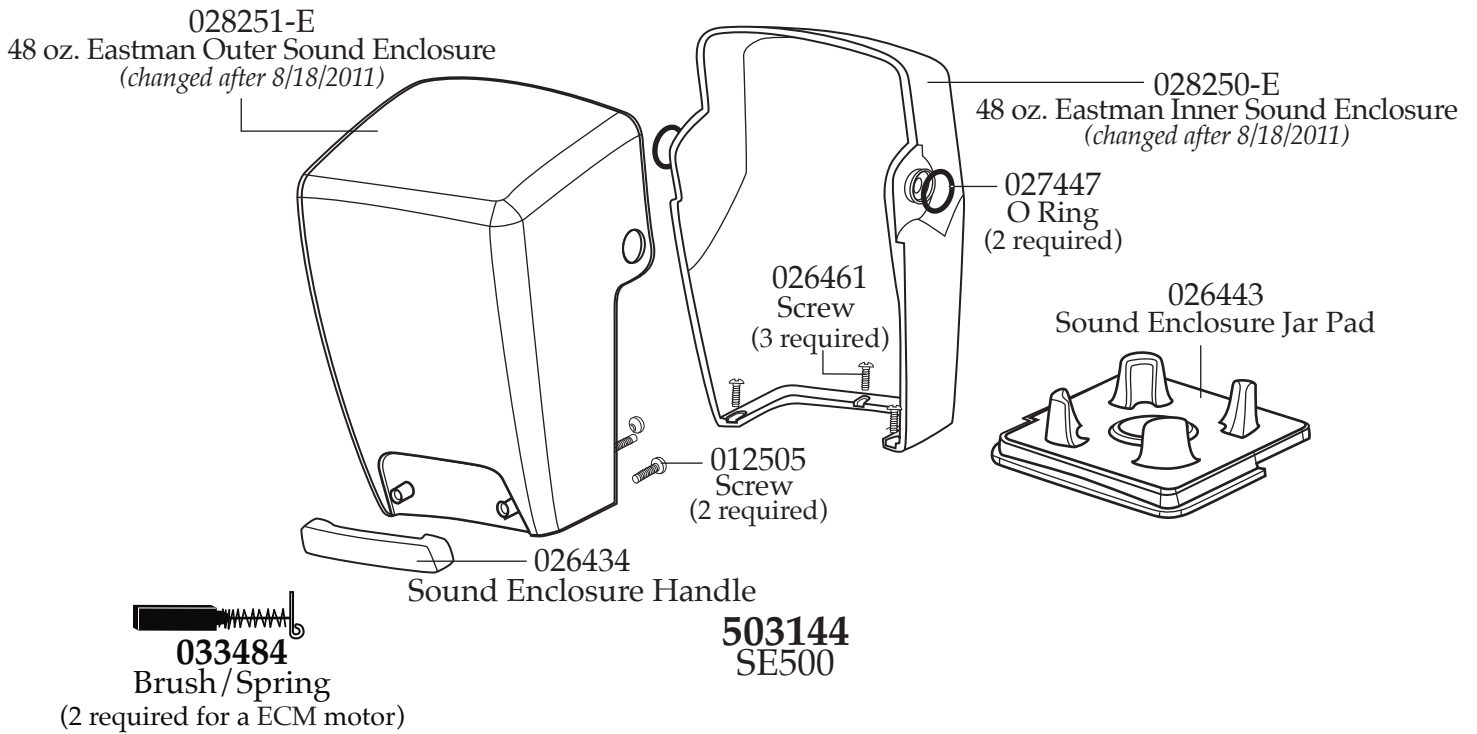
Catalog

Model

MX1100XTPEE MX1100XT21CE MX1100XT21EE
 MX1100XTPSEE MX1100XT22SCE MX1100XT22SEE
 (on units after 7/29/2009)

Waring Factory Service Center
 314 Ella T. Grasso Ave.
 Torrington, CT 06790
 Tele. 1-800-269-6640
 Fax 860-496-9017
 www.waringcommercialproducts.com

Illustration#	Part#	Description
26	037007	PCB Mounting Bracket (2 required <i>on units after 7/18/2019</i>)
27	013768	Screw (2 required <i>on units after 7/18/2019</i>)
28		<i>Bottom Housing Included with Illustration # 8</i>
29	012505	Screw (4 required)
30	026430	Corner Post (4 required)
31	028928	Sems (4 required)
32	503397	Blade Assembly (<i>on units after 3/18/2014</i>)
	503345	Blade Assembly
33	024271	O Ring
34	024268	Nut Gasket
35	029631	Bearing Holder Nut



Catalog

MX1100XTPEE MX1100XT21CE MX1100XT21EE
 MX1100XTPSEE MX1100XT22SCE MX1100XT22SEE
 (on units after 7/29/2009)

Model

Waring Factory Service Center
 314 Ella T. Grasso Ave.
 Torrington, CT 06790
 Tele. 1-800-269-6640
 Fax 860-496-9017
 www.waringcommercialproducts.com

Parts No Longer Used

(Last used on 8/22/2012)

